



To transfer a license you must have an Internet connection, have an Autodesk product installed on both computers, and perform an online export and import of the license.

Exporting:

A license is exported when the License Transfer utility moves a product license from a computer to the online Autodesk server.

The license can be exported as public or private. Exporting a license as public means that you are not reserving the license and anyone using the same serial number and their own user ID and password can import that license. Exporting a license as private means that you are reserving that license for yourself and the license can only be imported with the same serial number, your user ID, and your password.

To export a license

1. On the computer where you want to export the license, do one of the following:
 - (Windows XP) Click Start ► Programs ► Autodesk ► [Autodesk Product] ► License Transfer Utility.
 - (Windows Vista) Click Start ► All Programs ► Autodesk ► [Autodesk Product] ► License Transfer Utility.
 - (Mac OS X or Linux) Double-click the License Transfer Utility shortcut.

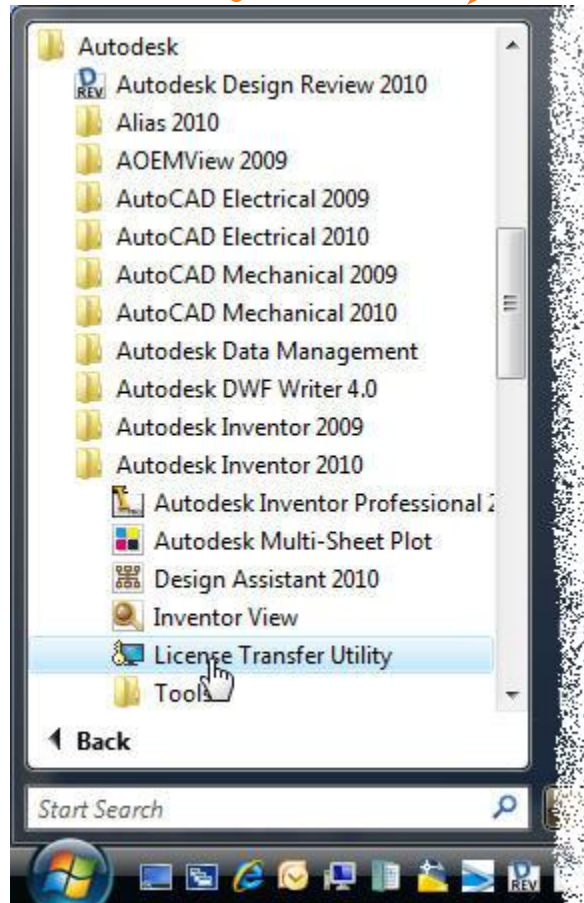


Figure 1

The License Transfer Utility dialog box displays the Autodesk product name and serial number.

2. In the License Transfer Utility dialog box, click Sign In.



Figure 2

3. On the Log In page, enter your Autodesk user ID and password and click Log In.

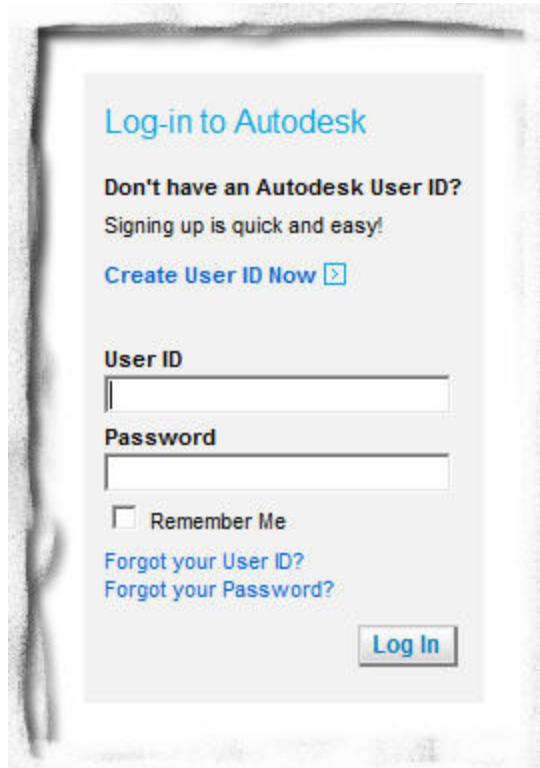


Figure 3

4. On the License Export page, confirm the export information.
5. If you want to make the license available as a public import, click Make the license available as a public import.
6. Click Export.

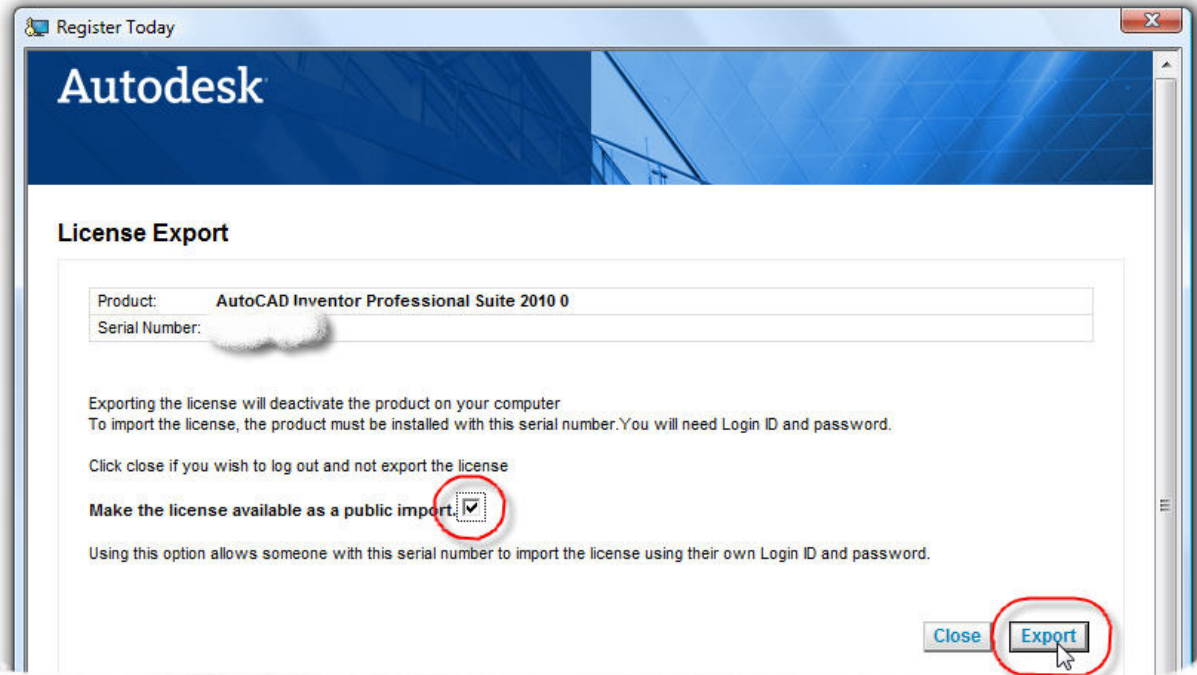


Figure 4

7. On the License Export Confirmation page, click Finish.

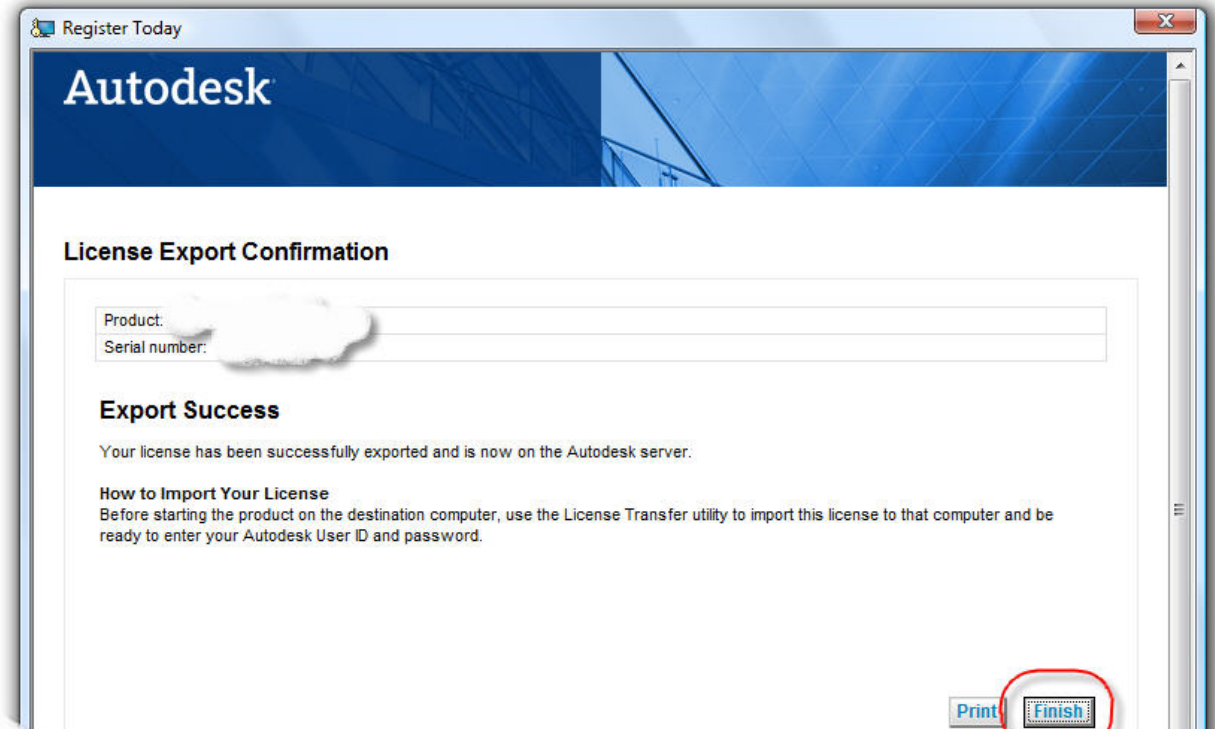


Figure 5

Ta-Da! The license is now exported to the Autodesk Server and is waiting there for you (or someone else in your company) to use.

Importing

A license is imported when the License Transfer utility moves a previously exported product license from the online Autodesk server to a computer.

When you have exported a product license from a computer, you complete the license transfer process by importing that license onto a computer. A license is imported when the License Transfer utility creates an active license on a computer, allowing your Autodesk product to run on this computer.

When you use the License Transfer utility to import a license to a computer, you are not activating the product on the computer; you are simply transferring your activation to this machine.

To import a license



1. On the computer where you want to import the license, do one of the following:

- (Windows XP) Click Start ► Programs ► Autodesk ► [Autodesk Product] ► License Transfer Utility.
- (Windows Vista) Click Start ► All Programs ► Autodesk ► [Autodesk Product] ► License Transfer Utility.
- (Mac OS X or Linux) Double-click the License Transfer Utility shortcut.

The Import the License dialog box displays the Autodesk product name and serial number.

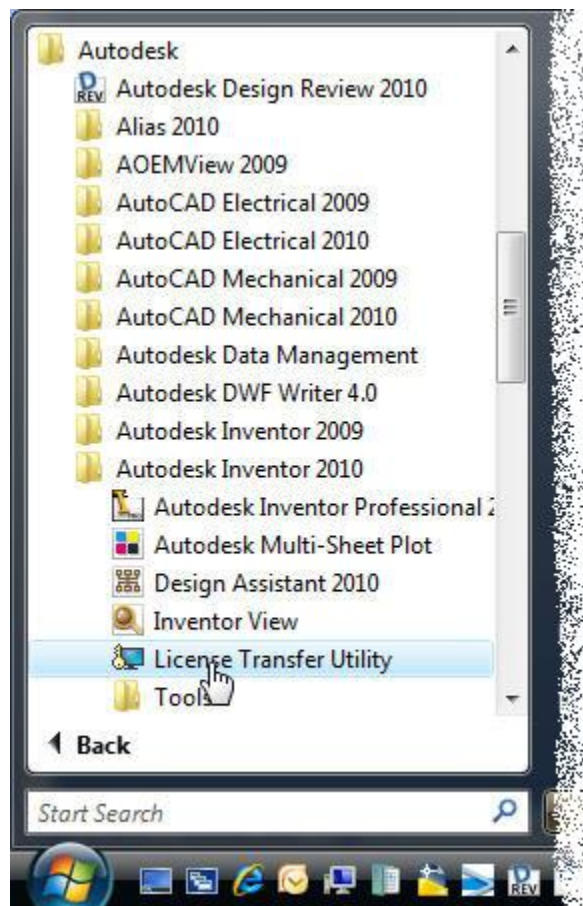


Figure 6

2. In the Import the License dialog box, click Sign In.



Figure 7

3. On the Log In page, enter your Autodesk user ID and password and click Log In.

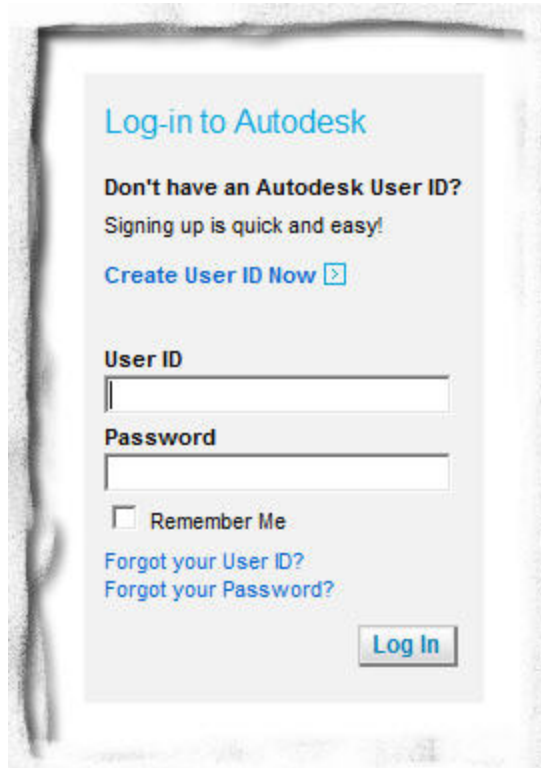


Figure 8

4. On the License Import Confirmation page, click Finish.

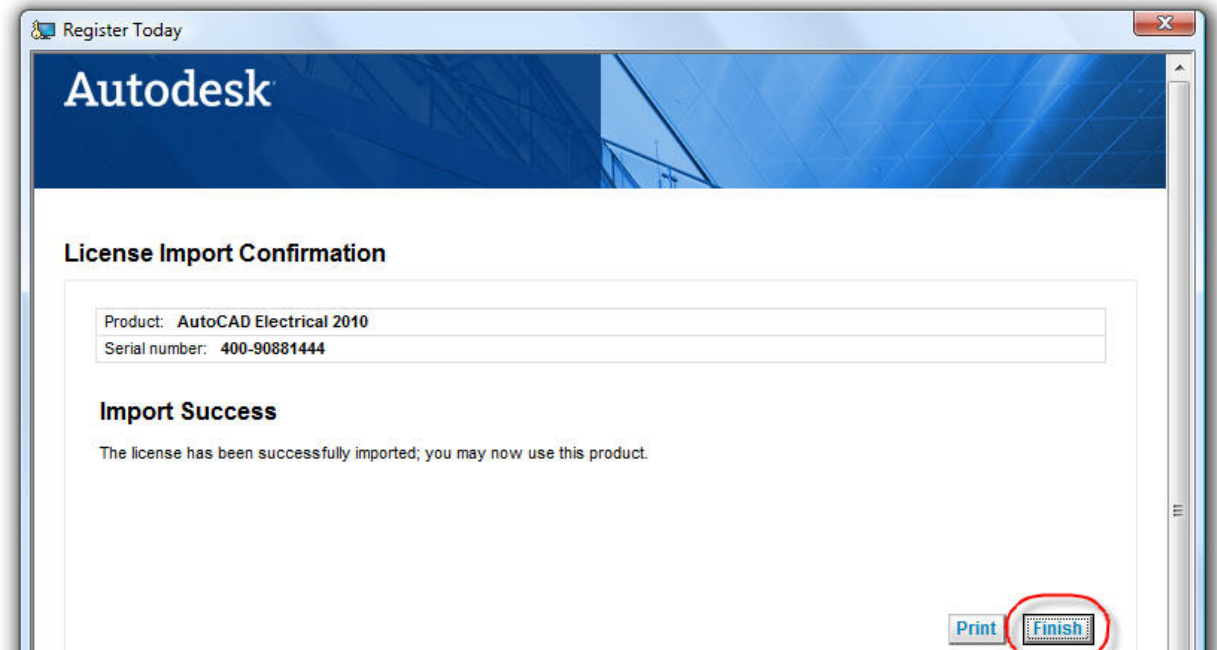


Figure 9

Ta-Da! The license is now imported to the computer and you can run your Autodesk product on this computer. If you want to transfer the license to another computer, repeat the export and import procedures.

All the above provided info (and more) can be found by clicking the handy little "?" in the lower left corner of the LTU dialog box. So, have fun, be flexible and stay compliant with your software licenses.